

Help Save Guam's Reefs

For Educators:

Guam Environmental Protection Agency website:

<http://epa.guam.gov/activities/for-educators/>

NOAA:

<http://coralreef.noaa.gov/education/educators/resourcecd/lessonplans/>

http://oceanservice.noaa.gov/education/kits/corals/lessons/coral_mgmt.pdf

National Park Service:

http://pacifichistoricparks.org/pdfs/guam_lessons/HabitatsofGuam.pdf

Division of Aquatic & Wildlife Resources website:

www.dawr.guam.gov

To schedule a presentation at your school, business, or agency, please contact:

Jane Dia
Resource Information and
Education Officer
Division of Aquatic and
Wildlife Resources
735-3982

Leave a message at the
DAWR office
735-3955/56

E-mail:
jmdguam@gmail.com



Guam Dept. of Agriculture

Div. of Aquatic and Wildlife Resources

DAWR Office
163 Dairy Road
Mangilao, GU 96913
www.dawr.guam.gov

Help Save Guam's Reefs

Tips to Help Guam's Natural Resources

Tel: 671 735 3955/56

Background

The newest edition of posters made by Guam Department of Agriculture, Division of Aquatic and Wildlife Resources, is "Help Save Guam's Reefs".

This poster is presented to educators to teach about the effects of various activities from upland areas all the way down to our oceans and reefs.

We request that this poster be used as a teaching tool to others, whether to children or adults, to share what they learned about protecting our coral reefs, our aquatic and other natural resources.

Thank you for helping us preserve Guam's heritage in protecting our resources now and for the future.

HOW TO USE THIS POSTER:

*Locate or develop lesson plans to teach about watersheds, habitats, or coral reef health.

*Look through the poster to find both the good practices and bad practices.

*Discuss how individuals, families, or community groups could contribute to protecting Guam's environment.

These are good practices:

- 1) Protect grasslands – re-grow badland by converting destroyed grass coverage to forests by planting trees.
- 2) Plant properly – plant crop rows parallel to streams to avoid fertilizer from entering the water.
- 3) Plant native trees – trees stop erosion and water from entering water.
- 4) Prevent sediment buildup – use proper sediment control in construction and land development.
- 5) Properly anchor – secure vessels to prevent reef damage.
- 6) Practice pollution control – do what you can to control any land-based sources of pollution.
- 7) Put in storm water controls – prevent future soil erosion and run-off.
- 8) Place animal farms away from a water source – a pig sty can contaminate our water supply.

These are poor practices:

- 1) Illegal burning – wild fires destroy native forests and wildlife habitat.
- 2) Improper planting – placing crop rows to face into streams.

3) Unnecessary land clearing – removing vegetation that filters sediment.

4) Arson (starting fires) – using illegal hunting techniques.

5) Any pollution – such as throwing out household wastewater, or oil, or allowing pig manure to flow into streams.

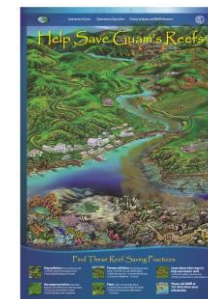
6) Illegal dumping – any dumping eventually will enter the ocean.

7) Improper off-roading activities – causing sediment to build up.

8) Overuse of pesticides – contaminating water, and organisms, such as fish and wildlife.

LEARN MORE

Natural resource agencies on Guam are available for more information on helping the reef, and have outreach and education programs that could help you to develop activities, field trips, and projects.



Please call the
Division of Aquatic
and Wildlife
Resources for more
information.
735-3982 or visit us:
www.dawr.guam.gov